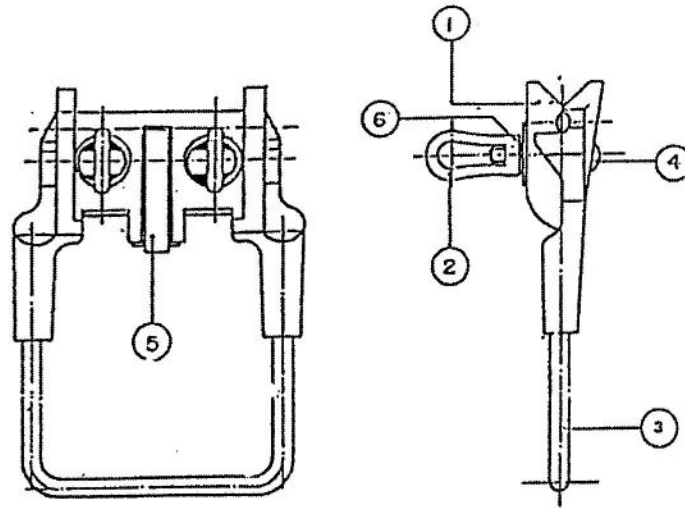


Item	Qty.	Description	Material	Item	Qty.	Description	Material
1				6			
2				7			
3				8			
4				9			
5				10			



MAT. NO.	FOR AL. AND AL-ALLOY COND. RANGE, SQ.MM	BAIL DIAMETER MINIMUM (mm)
0233 0000	25 - 50	6.3
0233 0001	70 -185	8.8

MATERIALS :	1. BODY	: ALUMINIUM ALLOY
	2. EYENUTS	: ALUMINIUM ALLOY
	3. BAIL	: PLATED COPPER
	4. BOLTS	: PLATED STEEL
	5. SPRING	: PLATED STEEL
	6. SPRING WASHER	: STAINLESS STEEL

BODY MARKING : APPLICABLE CONDUCTOR TYPE AND SIZE.

: MANUFACTURER'S SYMBOL.

MAX. TORQUE APPLYING MAT. NO. 0233 0000 220 LB-IN.

MAT. NO. 0233 0001 360 LB-IN.

Note:

1) The Strength (if any) and Galvanizing (if any) is according to the Standard.

2) The Tolerance needs to be applied for.

3) Dimensions and Weight given above are approximate.

The value is given for information only.

System 3 Co., Ltd.		ST3
PYSS	Drawing No. ST3 Z0150	Revision No. 01
	Title Bail Clamp, Hot Line (Hot Strirrup)	
Scale	NO	
Approved by	Material No.	
	Strength (Kg)	Weight App. (Kg)
SJ		



PROVINCIAL ELECTRICITY AUTHORITY
ELECTRICAL ENGINEERING AND TESTING DIVISION , TESTING SECTION

200 NGAM WONG WAN RD. CHATUCHAK BANGKOK 10900

Tel. 0-25909075-6 Fax.0-25909078

Test report No. ED-0393

Object : Hot line bail clamp for Al 25-50 mm²

PEA's Material No. : 1-02-033-0000

Reference note No. Our Ref. SC 080063 date 18 December 2008

Customer : SYSTEM 3 CO., LTD.

Testing Date : 22 Jan. – 2 Feb. 2009



PROVINCIAL ELECTRICITY AUTHORITY
ELECTRICAL ENGINEERING AND TESTING DIVISION

Test Report No. ED-0393

Page 1 of 3

1. Scope

Object : Hot line bail clamp for aluminium conductor 25-50 mm²

Product : ST3

PEA's Material No. : 1-02-033-0000

Reference note No. : Our Ref. SC 080063 date 18 December 2008

Customer : SYSTEM 3 CO., LTD.

2. Purpose

Test according to PEA's acceptance test

3. Sample Quantity

5 samples

4. Test description

- Dimension and details (PEA's drawing No. SA2 - 015/25017)
- Material (PEA's specification No. : R - 542/2543 sub clause 1c.3)
- Torque test and Operation test (PEA's specification No. : R - 542/2543 sub clause 1e)
- Marking (PEA's specification No. : R - 542/2543 sub clause 1c.6)

This test report certified only the specimen under tested and not be reproduced except in full, without written approval of testing laboratory.

Tested by

Asst. Manager 12 ก.พ. 2552

Chief of Section 01/กค 11.1 ก.พ. 2552

Manager 12 ก.พ. 2552



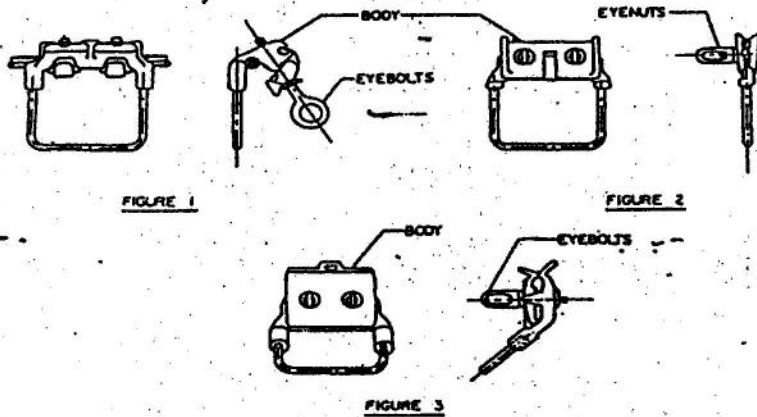
PROVINCIAL ELECTRICITY AUTHORITY
ELECTRICAL ENGINEERING AND TESTING DIVISION

Test Report No. ED-0393

Page 2 of 3

5. Test result

5.1 Dimension and Details (PEA's drawing No. SA2 - 015/25017)

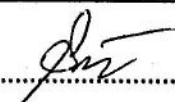
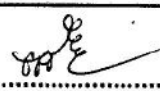


Test description	Specification	Test result of sample No.				
		1	2	3	4	5
Outward appearance	According to drawing No. SA2-015/25017	Passed	Passed	Passed	Passed	Passed
Bail diameter,mm	min 6.3	6.5	6.6	6.5	6.5	6.5
Assembled with conductor	Aluminium and aluminium-alloy conductor dia. 6.4-9.0 mm (size 25-50 sq.mm.)	Passed	Passed	Passed	Passed	Passed
Electrical compound in cond.groove	Prefilled	Filled	Filled	Filled	Filled	Filled

5.2 Material (PEA's specification No. : R - 542/2543 sub 1c.3)

Part	Specification	Test result of sample No.				
		1	2	3	4	5
Body	Aluminium - alloy	Aluminium - alloy				
Eye nuts	Aluminium - alloy	Aluminium - alloy				
Bail	Tin plated copper	Copper-with tin plated				
Spring washer(s)	Stainless steel or better	Stainless steel				
Spring	according to manufacture's design	Stainless steel				
Round washer (s)	according to manufacture's design	Stainless steel				

This test report certified only the specimen under tested and not be reproduced except in full, without written approval of testing laboratory.

Tested by  Asst. Manager  1 2 0 11 2552

Chief of Section  Manager 1 1 11 2552  1 2 0 11 2552



PROVINCIAL ELECTRICITY AUTHORITY
ELECTRICAL ENGINEERING AND TESTING DIVISION

Test Report No. ED-0393

Page 3 of 3

5.3 Torque test and Operation test (PEA's specification No. : R - 542/2543 sub clause 1e)

Description	Specification	Test result of sample No.				
		1	2	3	4	5
Torque test, with Al 50 mm ² (120% acc. to EEI-NEMA No. TDJ-162)	201.6 lbs. - inch 5 times	-	-	Passed	Passed	Passed
Operation test	5 times	Passed	Passed	-	-	-

5.4 Marking (PEA's specification No. : R - 542/2543 sub clause 1c.6)

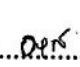
Sample No.	Mark on sample
1	ST3 AL 25-50 mm ²
2	
3	
4	
5	
Specification	- Applicable conductor types and size - Manufacturer's symbol

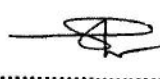
Remark : PEA's Testing Section Laboratory can test particular items as shown in this report only.

This test report certified only the specimen under tested and not be reproduced except in full, without written approval of testing laboratory.

Tested by 

Asst. Manager  12 N.W. 2552

Chief of Section  12 N.W. 2552

Manager  12 N.W. 2552



PROVINCIAL ELECTRICITY AUTHORITY
ELECTRICAL ENGINEERING AND TESTING DIVISION , TESTING SECTION

200 NGAM WONG WAN RD. CHATUCHAK BANGKOK 10900

Tel. 0-25909075-6 Fax.0-25909078

Test report No. ED-0394

Object : Hot line bail clamp for Al 70-185 mm²

PEA's Material No. : 1-02-033-0001

Reference note No. Our Ref. SC 080063 date 18 December 2008

Customer : SYSTEM 3 CO., LTD.

Testing Date : 22 Jan. – 2 Feb. 2009

This test report certified only the specimen under tested and not be reproduced except in full, without written approval of testing laboratory



PROVINCIAL ELECTRICITY AUTHORITY
ELECTRICAL ENGINEERING AND TESTING DIVISION

Test Report No. ED-0394

Page 1 of 3

1. Scope

Object : Hot line ball clamp for aluminium conductor 70-185 mm²

Product : ST3

PEA's Material No. : 1-02-033-0001

Reference note No. : Our Ref. SC 080063 date 18 December 2008

Customer : SYSTEM 3 CO., LTD.

2. Purpose

Test according to PEA's acceptance test

3. Sample Quantity

5 samples

4. Test description

- Dimension and details (PEA's drawing No. SA2 - 015/25017)
- Material (PEA's specification No. : R - 542/2543 sub clause 1c.3)
- Torque test and Operation test (PEA's specification No. : R - 542/2543 sub clause 1e)
- Marking (PEA's specification No. : R - 542/2543 sub clause 1c.6)

This test report certified only the specimen under tested and not be reproduced except in full, without written approval of testing laboratory.

Tested by 

Asst. Manager  12 Nov. 2552

Chief of Section  11 Nov. 2552

Manager  12 Nov. 2552



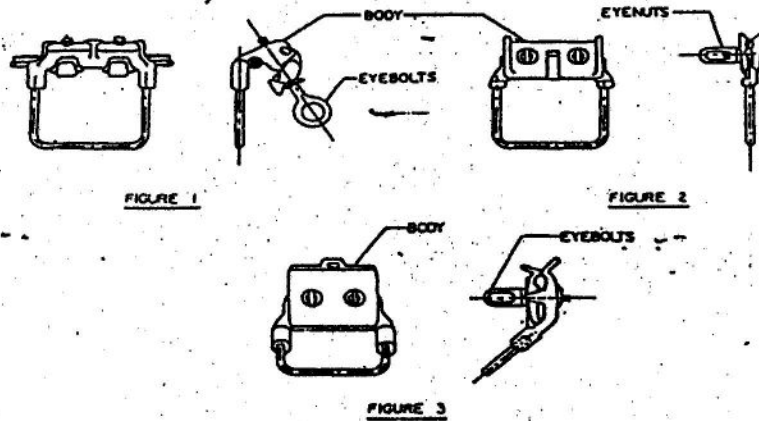
PROVINCIAL ELECTRICITY AUTHORITY
ELECTRICAL ENGINEERING AND TESTING DIVISION

Test Report No. ED-0394

Page 2 of 3

5. Test result

5.1 Dimension and Details (PEA's drawing No. SA2 - 015/25017)

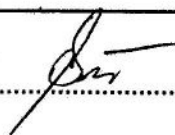
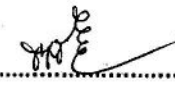



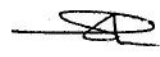
Test description	Specification	Test result of sample No.				
		1	2	3	4	5
Outward apperance	According to drawing No. SA2-015/25017	Passed	Passed	Passed	Passed	Passed
Bail diameter,mm	min 8.8	9.3	9.3	9.2	9.2	9.3
Assembled with conductor	Aluminium and aluminium-alloy conductor dia. 10.75-17.64 mm (size 70-185 sq.mm.)	Passed	Passed	Passed	Passed	Passed
Electrical compound in cond.groove	Prefilled	Filled	Filled	Filled	Filled	Filled

5.2 Material (PEA's specification No. : R - 542/2543 sub 1c.3)

Part	Specification	Test result of sample No.				
		1	2	3	4	5
Body	Aluminium - alloy	Aluminium - alloy				
Eyenuts	Aluminium - alloy	Aluminium - alloy				
Bail	Tin plated copper	Copper with tin plated				
Spring washer(s)	Stainless steel or better	Stainless steel				
Spring	according to manufacture's design	Stainless steel				
Round washer (s)	according to manufacture's design	Stainless steel				

This test report certified only the specimen under tested and not be reproduced except in full, without written approval of testing laboratory.

Tested by  Asst. Manager  1 2 P.W. 2552

Chief of Section  Manager  1 1 P.W. 2552



PROVINCIAL ELECTRICITY AUTHORITY
ELECTRICAL ENGINEERING AND TESTING DIVISION

Test Report No. ED-0394

Page 3 of 3

5.3 Torque test and Operation test (PEA's specification No. : R - 542/2543 sub clause 1e)

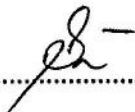
Description	Specification	Test result of sample No.				
		1	2	3	4	5
Torque test, with Al 185 mm ² (120% acc. to EEI-NEMA No. TDJ-162)	360 lbs. - inch 5 times	-	-	Passed	Passed	Passed
Operation test	5 times	Passed	Passed	-	-	-


5.4 Marking (PEA's specification No. : R - 542/2543 sub clause 1c.6)


Sample No.	Mark on sample
1	ST3 AL 70-185 mm ²
2	
3	
4	
5	
Specification	- Applicable conductor types and size - Manufacturer's symbol

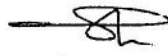
Remark : PEA's Testing Section Laboratory can test particular items as shown in this report only.

This test report certified only the specimen under tested and not be reproduced except in full, without written approval of testing laboratory.

Tested by 

Asst. Manager  12 N.W. 2552

Chief of Section  11 N.W. 2552

Manager  12 N.W. 2552