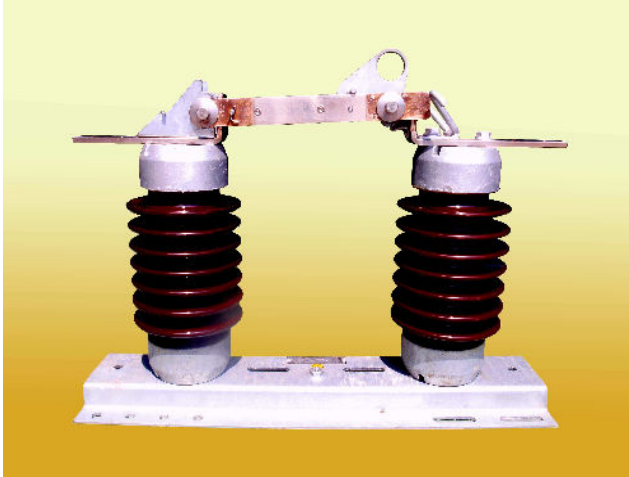




POWER U-TAH GROUP CO.,LTD

Disconnecting Switch

Distribution & Substation Type



- Type D1LH Disconnecting switches are designed to meet ANSI and IEC standard.
- Rated voltage up to 38 kV.
- Rated continuous current up to 600 A.
- Peak short time withstand current up to 125 kA.
- ISO 9001 certificated.

Specification

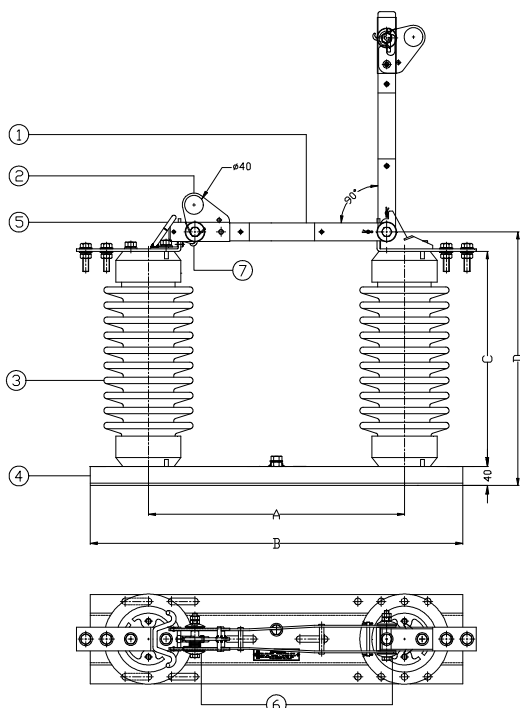
Type	PUG Distribution & Substation disconnecting switch	
	D1LH 24/600	D1LH 36/600
Rated max.voltage (kV)(r.m.s.)	26	38
Rated continuous current (A)	630	630
Rated frequency (Hz)	50/60	
Rated lightning impulse withstand voltage (kV)(peak)	150	200
Rated power frequency withstand voltage, 1 min. dry (kV)(r.m.s.)	70	95
Rated power frequency withstand voltage, 10 sec. wet (kV)(r.m.s.)	60	80
Rated peak withstand current (kA)	68	68
Rated Short-Time withstand current (kA)(r.m.s.)	25	25
Weight (kg)	35.5	50

Feature

Type D1LH disconnecting switches are designed, manufactured, and tested with the essential features conforming to the long established standard of ANSI C37.30 through C37.32 while meeting at the same time increasingly wide spread acceptance of International Standard IEC 62271-1, Series 2, with respect to their current and voltage requirement.

- Switch blade (1) of high conductivity hard drawn copper, double busbar construction, rigidly formed for extra durability.
- Stationary contacts (5) are bronze cast as an integral part of the terminal pads whereby the current transfer point are kept at a minimum.
- Terminal pads drilled in accordance with NEMA standard to suit the traditional requirement, and are tin plated to accommodate either copper or aluminum terminal connector.
- All moving and stationary contact surface are silver plated to form silver to silver contact, for reliable current transfer.
- Belleville type spring washer (6) at all hinges to ensure uniform contact pressure.
- 90° Blade opening stop supplied as standard.
- Specially designed latching mechanism (7) positively locks the blade in the close position to eliminate any possible accidental opening even under short circuit condition.
- Intentional opening of the blade is made easy with the built-in payout aid coming into action together with the unlatching of the blade when the operating eye is pulled toward the other end of the blade.
- Wet-process post type insulators (3) with characteristics in strict compliance with ANSI/NEMA Standard C29.9.
- Steel channel base (4) and other related hardware are hot-dip galvanized in accordance with ASTM specification.
- Operating eye (2) with large inner diameter for easy hook stick operation and particularly advantageous when use of load buster tool will be needed.

Dimension



Type	Dimensions (mm.)				Weight (kg.)
	A	B	C	D	
D1LH 24/600	400	700	355	437	35.5
D1LH 36/600	550	800	457	539	50.0