

**TECHNICAL PROPOSAL**

**FOR**

**HIGH VOLTAGE FUSE LINK**

**TYPE K**

**RATED VOLTAGE 27 KV.(Max)**

**PRECISE**

**PRECISE GREEN PRODUCTS CO., LTD.**

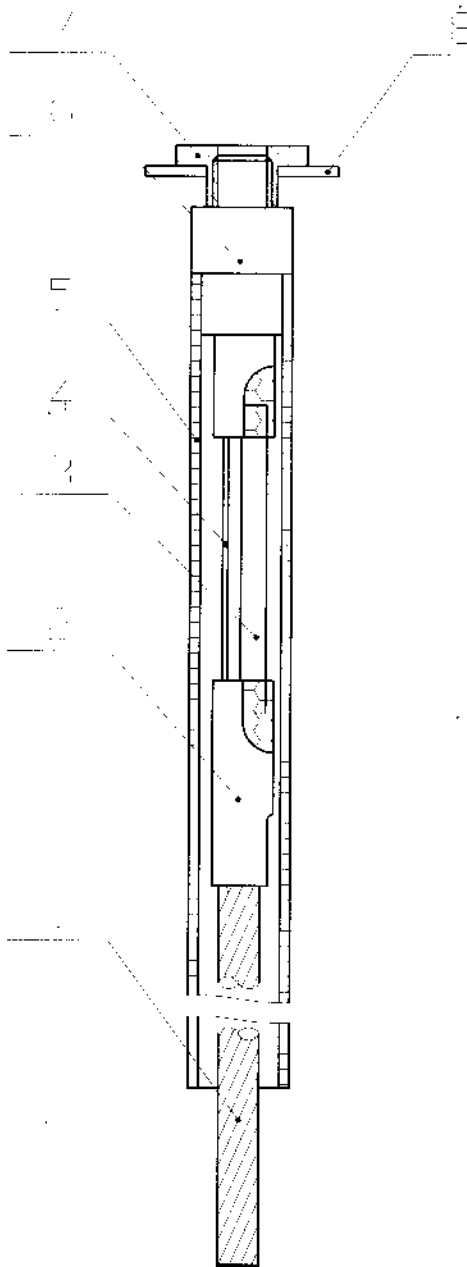
**TYPE K**

**PRECISE**

---

**HIGH VOLTAGE FUSE LINK**

---



**GENERAL**

PRECISE GREEN PRODUCTS CO.,LTD. research and develop the fast characteristic fuse link type K to protect distribution equipment by being used in Expulsion High Voltage Dropout Open Distribution Fuse Cutout that existing sale in the market.

PRECISE fuse link is design by apply to ANSI/IEEE C37.42 and C37.41

**BUTTON HEAD**

The PRECISE fuse link button head is removable with can use with fuse cutout that fuse holder was design for using with arc-shortening rod.

**COMPONENT & CONSTRUCTION**

Each component is designed and selected to meet the good quality fuse link and the requirement of ANSI/IEEE standard.

1. Flexible wire
2. Copper tube
3. Fuse element
4. Strain element
5. Arc extinguishing tube
6. Button head
7. Removable button head
8. Washer ( It shall be supplied only for current rated 1 to 50 Ampere)

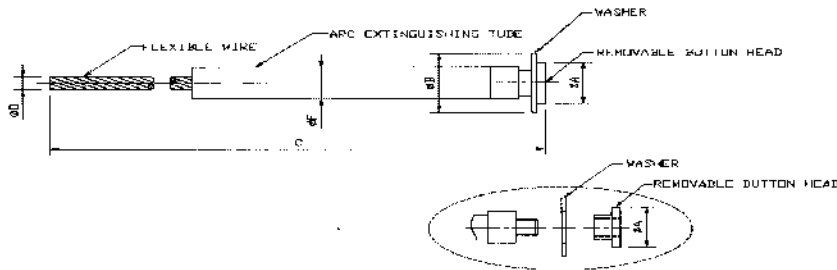
Note: For rated current 1,2 and 3A have only one fuse element instead of strain wire position

# TYPE K

# PRECISE

## HIGH VOLTAGE FUSE LINK

### FUSE LINK TYPE K : REMOVABLE BUTTON HEAD FOR FUSE HOLDER 100 AMPERE



### CURRENT RATED, CATALOG NUMBER AND DIMENSION

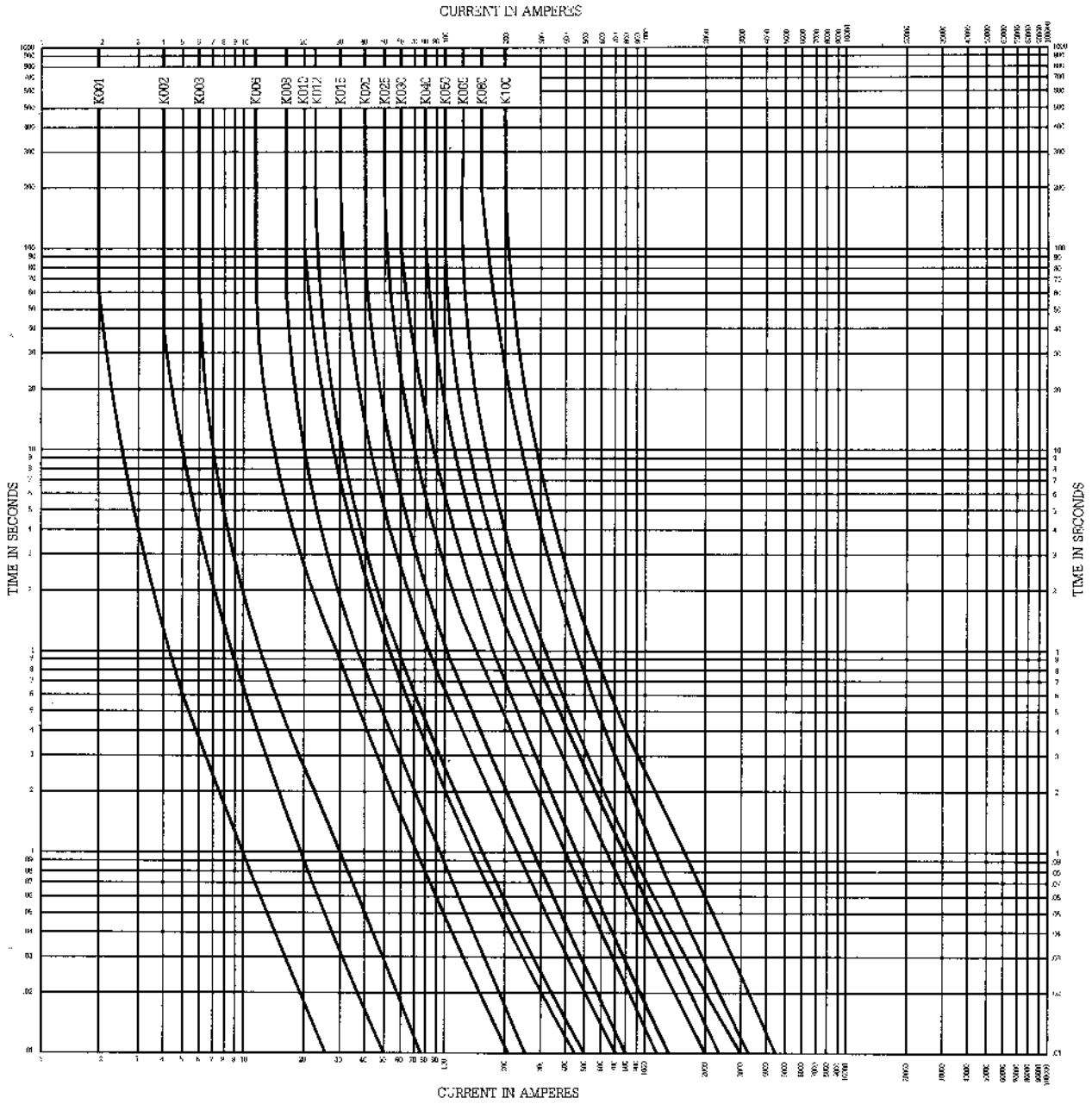
Ampere	Catalog number		C(mm) Min.		ØA(mm)	ØB(mm)	ØD(mm)	ØF(mm)
	27KV	38KV	27KV	38KV	±0.5 mm	±0.5 mm	±0.5 mm	±1.5 mm
1	K00127	K00138	661	760	12.7	19.0	2.0	8.0
2	K00227	K00238	661	760	12.7	19.0	2.0	8.0
3	K00327	K00338	661	760	12.7	19.0	2.0	8.0
6	K00627	K00638	661	760	12.7	19.0	2.0	8.0
8	K00827	K00838	661	760	12.7	19.0	2.0	8.0
10	K01027	K01038	661	760	12.7	19.0	2.0	8.0
12	K01227	K01238	661	760	12.7	19.0	2.0	8.0
15	K01527	K01538	661	760	12.7	19.0	2.0	8.0
20	K02027	K02038	661	760	12.7	19.0	2.5	8.0
25	K02527	K02538	661	760	12.7	19.0	2.5	8.0
30	K03027	K03038	661	760	12.7	19.0	3.0	8.0
40	K04027	K04038	661	760	12.7	19.0	3.0	8.0
50	K05027	K05038	661	760	12.7	19.0	4.0	10.0
65	K06527	K06538	661	760	19.0	NO	4.0	10.0
80	K08027	K08038	661	760	19.0	NO	5.0	10.0
100	K10027	K10038	661	760	19.0	NO	5.0	10.0

Note: 1) Button head thread size ¼" pitch G28 length 7 mm +/- 1 mm

2) For rated current 1,2 and 3A have only one fuse element instead of strain wire position

3) Washer will supply only with current rated 1 to 50 Ampere

MELTING TIME-CURRENT CURVE

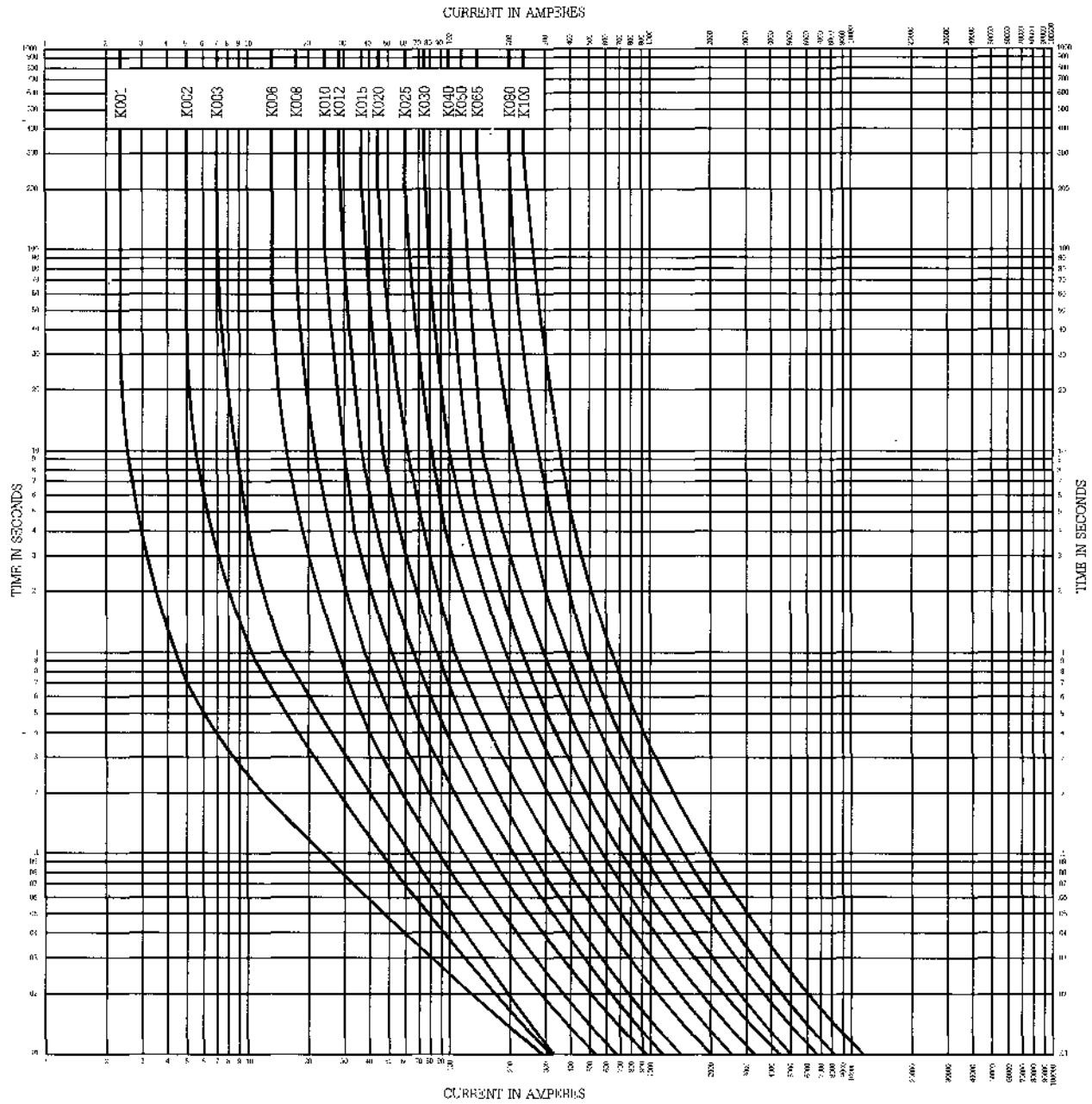


RATED VOLTAGE 27 KV

# FUSE LINK TYPE K

# PRECISE

## TOTAL CLEARING TIME-CURRENT CURVE



RATED TEST VOLTAGE 27 KV



**U-TAH INDUSTRY LTD..PART.**

# HIGH-VOLTAGE FUSE LINK

***Type K***



- \* High voltage fuse links type FLK01 are designed to meet ANSI / IEEE standard
- \* Removable and Solid button head type.
- \* Rated voltage up to 38 kV.
- \* Rated continuous current up to 100 A.
- \* ISO 9001 certificated.

## Specification

	U-Tah High Voltage Fuse Link		
Type	Removable and solid button head Type K		
	FLK01/15	FLK01/27	FLK01/38
Rated voltage (kV)	15	27	38
Rated continuous current (A)	1 - 100		
Frequency (Hz)	50		
Length (mm.)(approx.)	575	665	775
Referance standard	ANSI / IEEE C37		
Tensile withstand strength (Pounds)	> 10		
Melting time-current and Total clearing time-current characteristic	In accordance to standard requirements.		

## Reliability

Every U-tah high voltage fuse link meet ANSI / IEEE C37 standard. U-tah high voltage fuse link are used for 15-38 kV drop-out fuse cutout. Fuse element employs low melting alloy and copper strand leads are fitted with bottom washers. Fuse links are equipped with auxiliary arc-extinguishing tube which can interrupt over load or fault current of short-circuit.

## Product & Quality Control

All U-tah high voltage fuse links are manufactured to fully meet international standard. Foreign technical cooperation helps assure manufacturing process, quality conformity , testing and quality control and make the U-tah high voltage fuse links an international protective device.

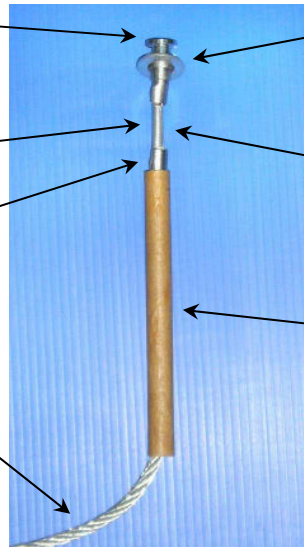
## Constructions

**Removable or Solid Button Head :** Made of brass with nickle plated.

**Fuse Element :** Made of low melting alloy.

**Copper tube :** Made of copper with nickle plated. It's connect the fuse element to fuse link cable.

**Fuse link cable :** Made of copper strand with corrosion resistance coating.

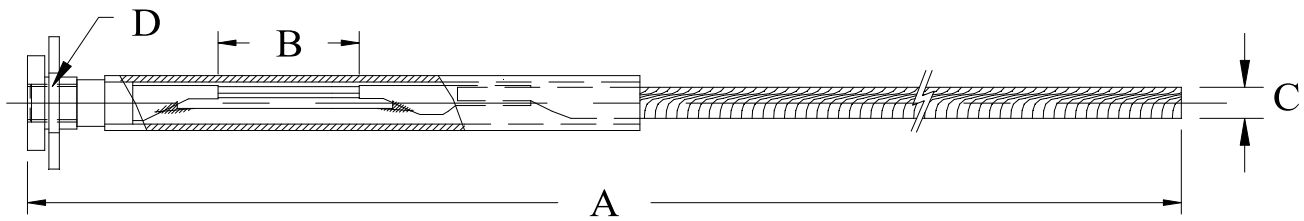


**Round Flat Washer :** Made of brass with nickle plated.

**Strain Wire :** Made of stanless steel.It's high tension strength.

**Sheath :** It's filament would fiberglass epoxy-bounded sheath for unmatched full-fault-spectrum interrupting performance.

## Dimensions



Current (A)	Dimensions (mm.)											
	FLK01/15				FLK01/27				FLK01/38			
	A	B	C	D	A	B	C	D	A	B	C	D
1-15	575	20	2	1/4x28G	665	20	2	1/4x28G	775	20	2	1/4x28G
20,25	575	20	2.5	1/4x28G	665	20	2.5	1/4x28G	775	20	2.5	1/4x28G
30,40	575	20	3	1/4x28G	665	20	3	1/4x28G	775	20	3	1/4x28G
50,65	575	20	4	1/4x28G	665	20	4	1/4x28G	775	20	4	1/4x28G
80100	575	20	4.5	1/4x28G	665	20	4.5	1/4x28G	775	20	4.5	1/4x28G

Note : Values in table are approximate.