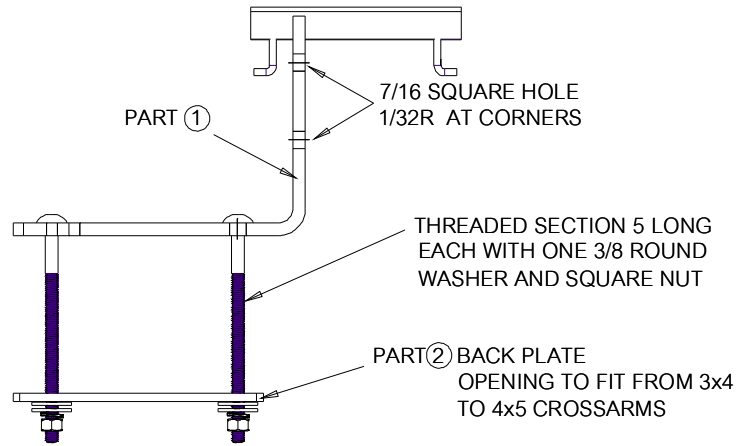
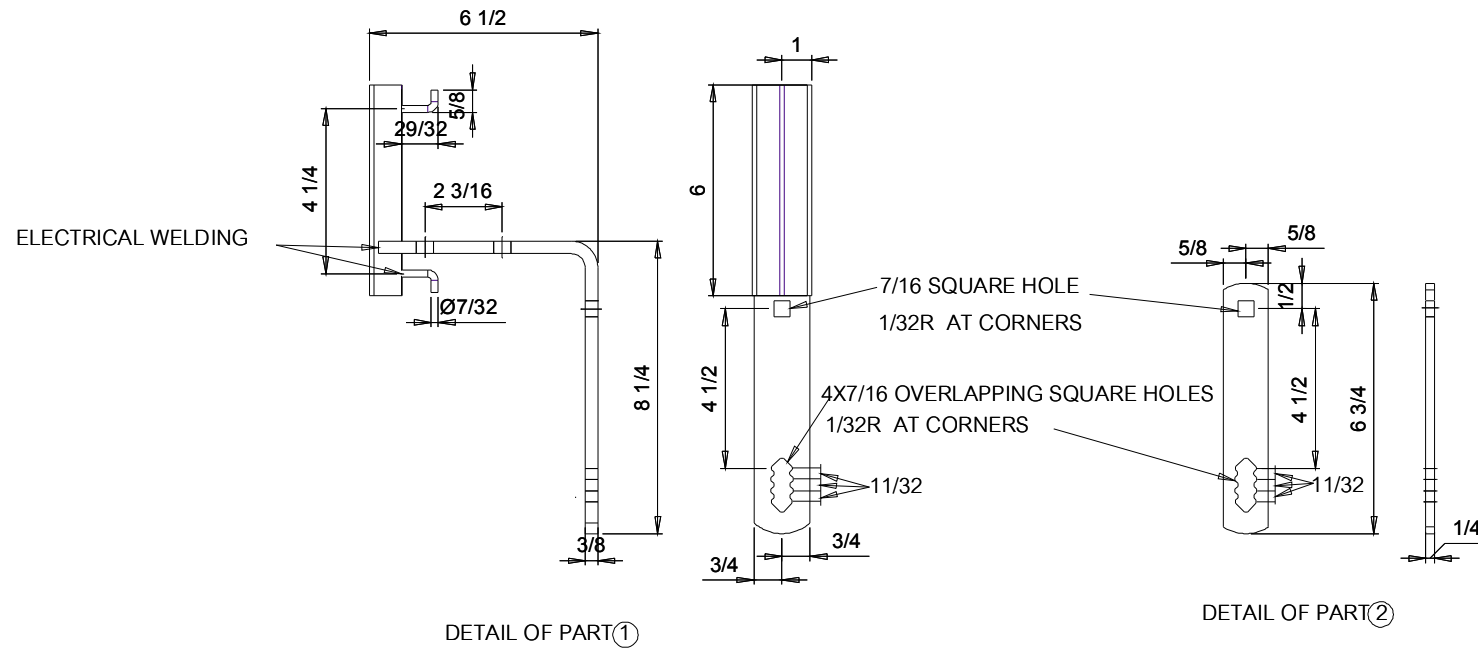


FOR BACK TO BACK MOUNTING OF ARRESTER AND  
CUTOUT REMOVE PART ② AND USE TWO PART ①



TYPE A BRACKET ASSEMBLY



**NOTES**

1. All dimensions are in inches.
2. Dimensions do not cover galvanizing, but part should fit together after galvanizing.

|   |          |                       |           |
|---|----------|-----------------------|-----------|
| <b>IAMPONG DEVELOPMENT CO., LTD</b>               |          |                       |           |
| TITLE:<br><b>MOUNTING BRACKET FOR TERMINATION</b> |          |                       |           |
| SIZE<br>A   | FSCM No. | DWG. No. DWG_MBTE 101 | REV. DATE |
| SCALE 1:6   |          | SHEET 1 OF 1          |           |