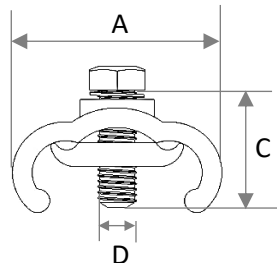
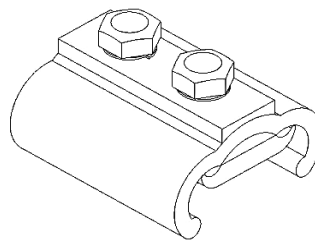
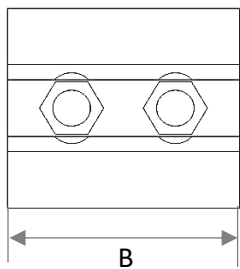
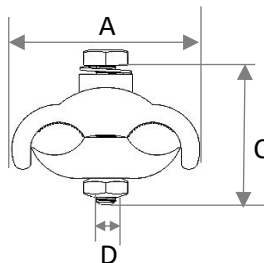
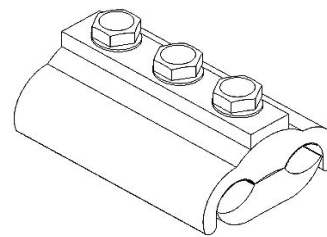
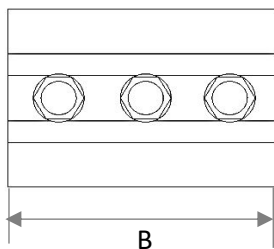


Connector Parallel Groove
2 bolt-type



Connector Parallel Groove
3 bolt-type



PEA Material no.	Conductor Range		Number of Bolt (set)	Dimensions				Tightening Torque Level of Galvanized Steel Bolts kgf-m
	Main Size (sq.mm.)	Tap Size (sq.mm.)		A (mm.)	B (mm.)	C (mm.)	D (mm.)	
1020300101	16-70	16-70	2	35	50	40	M8	2.0
1020300102	25-95	25-95	2	42	55	40	M8	2.0
1020300103	70-185	70-185	3	61	90	50	M10	2.7



IAMPONG
DEVELOPMENT

บริษัท เอี่ยมพงศ์พัฒนา จำกัด
IAMPONG DEVELOPMENT CO.,LTD

Approved by

Managing Director

PEA Material No

1020300101-

1020300103

พีจี คอนเนคเตอร์ หรับสายอลูมิเนียม อลูมิเนียมอัลลอย

Connector Parallel Groove

Date : 12/2/63